

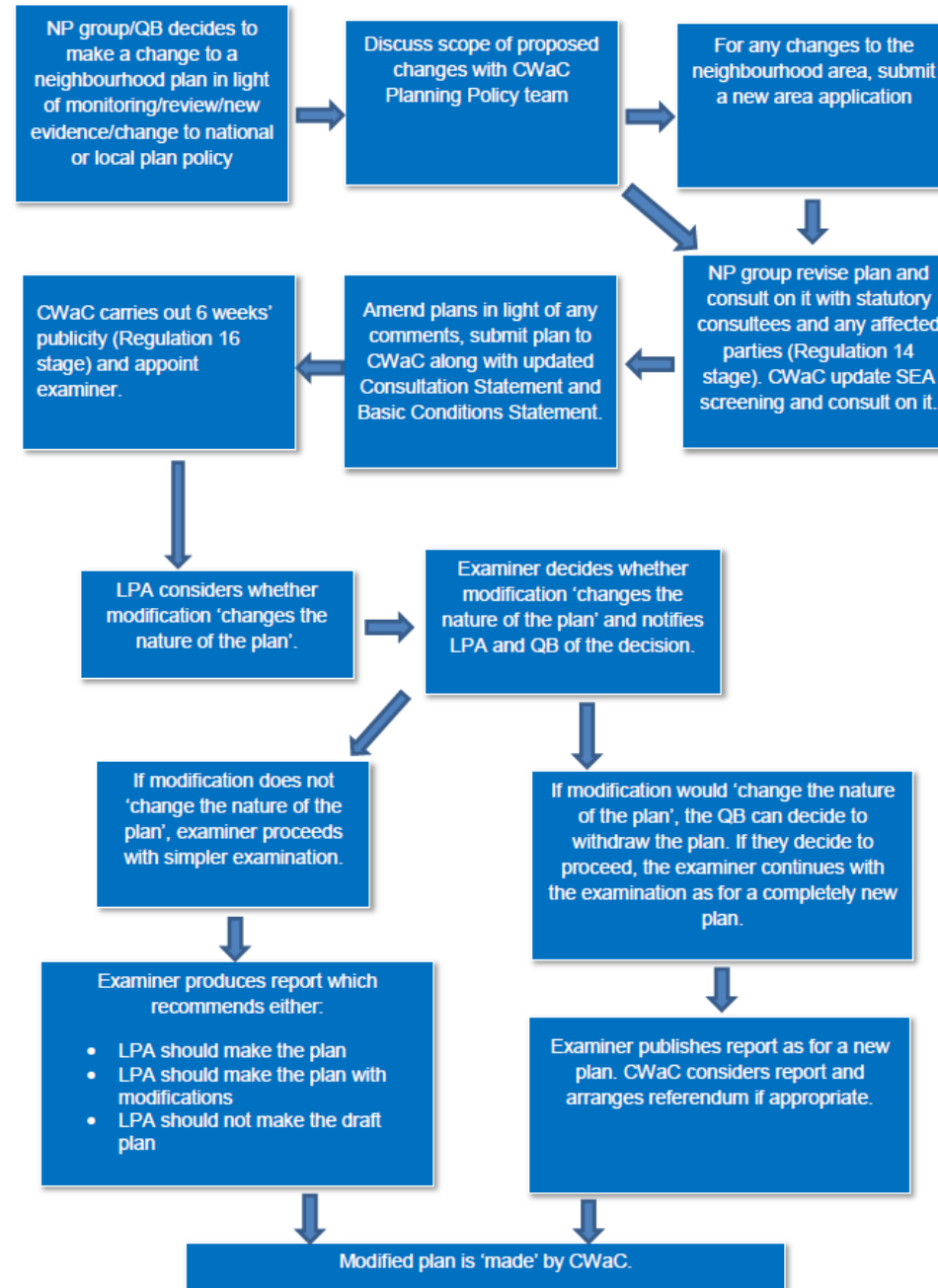
# Neighbourhood Plan Review

Tattenhall

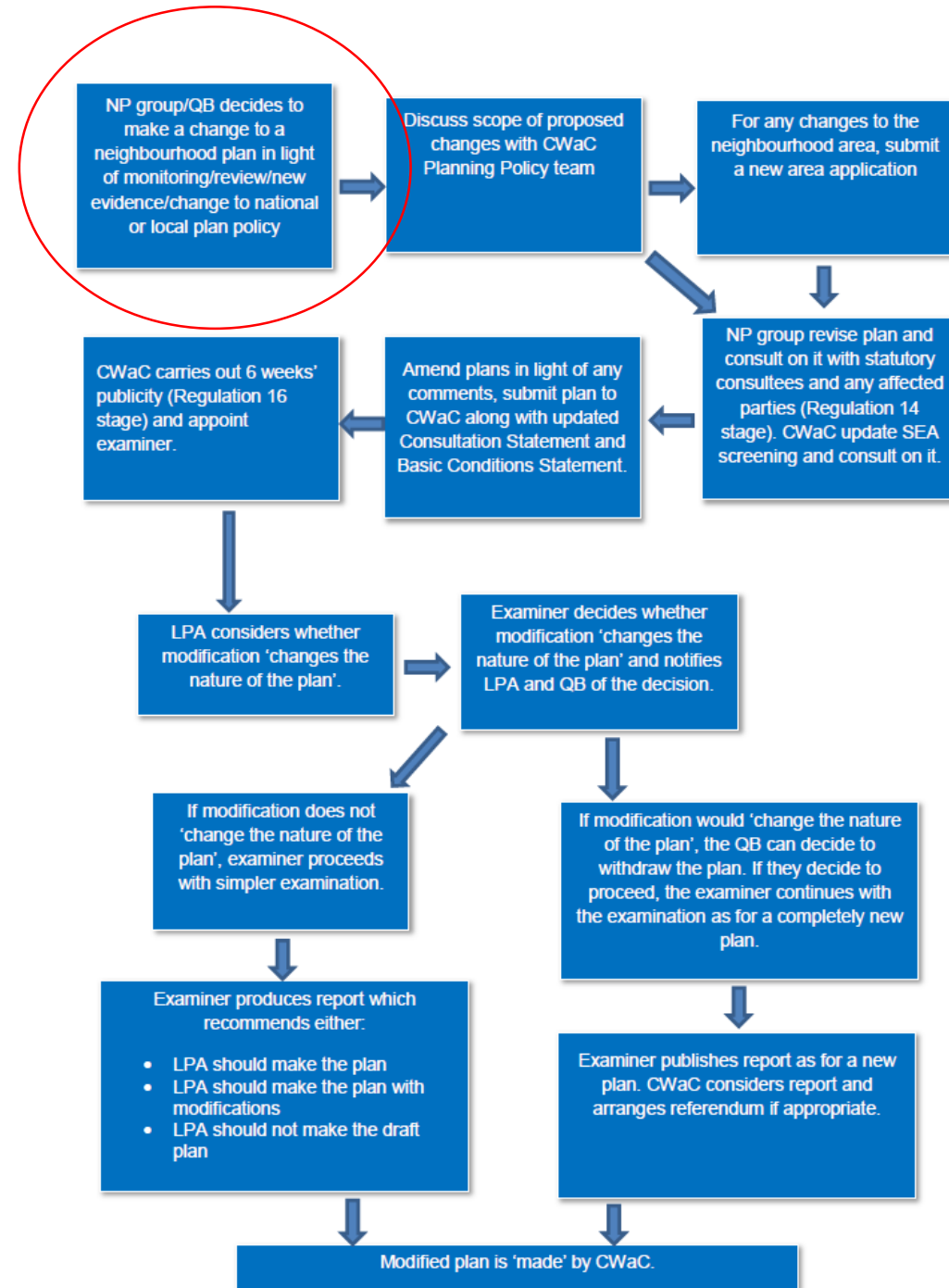
# Why?

- Conform to changes in the Local Plan
- Improve or add to existing policies
- Because review every 5 years is written into the Plan (p25)

# Review Procedure

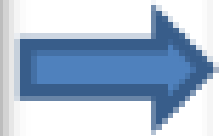


# Review Procedure



# First Step

NP group/QB decides to  
make a change to a  
neighbourhood plan **in light**  
**of monitoring/review/new**  
evidence/change to national  
or local plan policy



# Monitoring - questions

- How well is the Plan working in practice?
- Which policies have influenced planning decisions?
- Which policies have not worked and need modifying?
- Were there any omissions in the Plan?
- What changes are needed in light of new NPP and LP?
- Has the Plan achieved its objectives?

# Monitoring

- Focus on environmental impact
- Use a selection of locally specific indicators
- Assessment should be yearly
- By the local community

Sustainability Appraisal Report May 2013

# Monitoring

- *“The policies within most neighbourhood plans will be able to be monitored using the existing monitoring framework established through the Local Plan (Part One) ...”*

Annual Monitoring Report 2018



# Selecting indicators – 8 Plan Objectives

1. Delivery of a housing growth strategy tailored to the needs and context of Tattenhall
2. Sensitive development which protects and enriches the landscape and built setting
3. Sustaining and improving excellent local facilities for existing and new residents
4. Strengthening and supporting economic activity

# Selecting indicators – 8 Plan Objectives

5. Seek on-going improvements to transport, to utility infrastructure and to digital connectivity
6. Prioritise local distinctiveness in every element of change and growth
7. Protect green-space, the landscape and support nature conservation
8. Involve local people in an on-going basis in the process of plan-making, monitoring and delivery of development

# Selecting indicators

- Each objective may be mapped to NP and LP policy e.g.

<b>Objective</b>	<b>LPP1 SE</b>	<b>NP</b>
Delivery of a housing growth strategy tailored to the needs and context of Tattenhall	SE46, SE50, SE51	Policy 1 Policy 2
Sensitive development which protects and enriches the landscape and built setting	SE12, SE38, SE39, SE40	TVDS Policy 1 Policy 2

# Selecting indicators

	NP Policy	NP indicator [and source]	Target
<b>OBJECTIVE 1 Delivery of a housing growth strategy tailored to the needs and context of Tattenhall</b>			
	1a Proposals involving up to 30 homes will be allowed within or immediately adjacent to the built-up part of Tattenhall village over the period 2010 to 2030	Number of developments involving over 30 homes 2014-2030 [CWAC Housing Land Monitor reports] [Planning application monitoring]	Zero
	1b Smaller scale development of exception sites will be allowed within the hamlets of Gatesheath and Newton-by-Tattenhall over the period 2010 to 2030.	Number exception sites completed within the hamlets of Gatesheath and Newton-by-Tattenhall 2014-2030 [CWAC Housing Land Monitor reports] [Planning application monitoring]	n/a

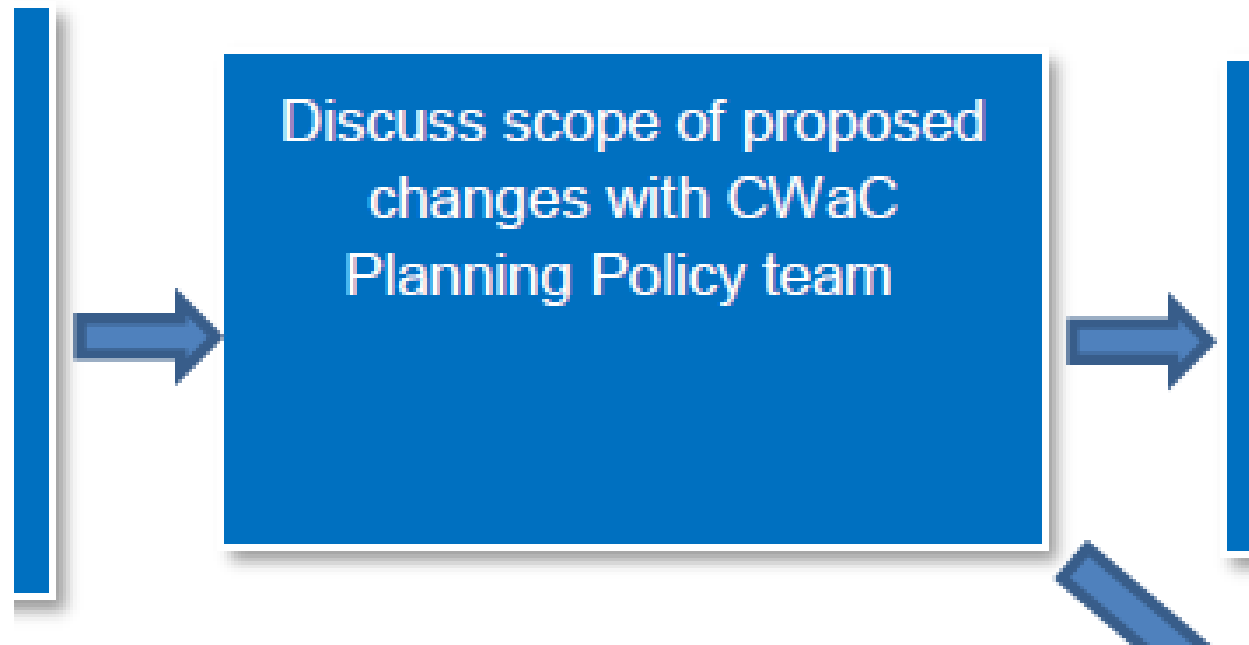
# Additional indicators

We might decide to assess other aspects of the planning process such as:

- weight given to NP policies in planning decisions and appeals,
- housing provision vs. housing needs survey or
- NP policies ignored/overridden

# Next step

Once monitoring has been completed we will be in a position to decide to:



... or not!