

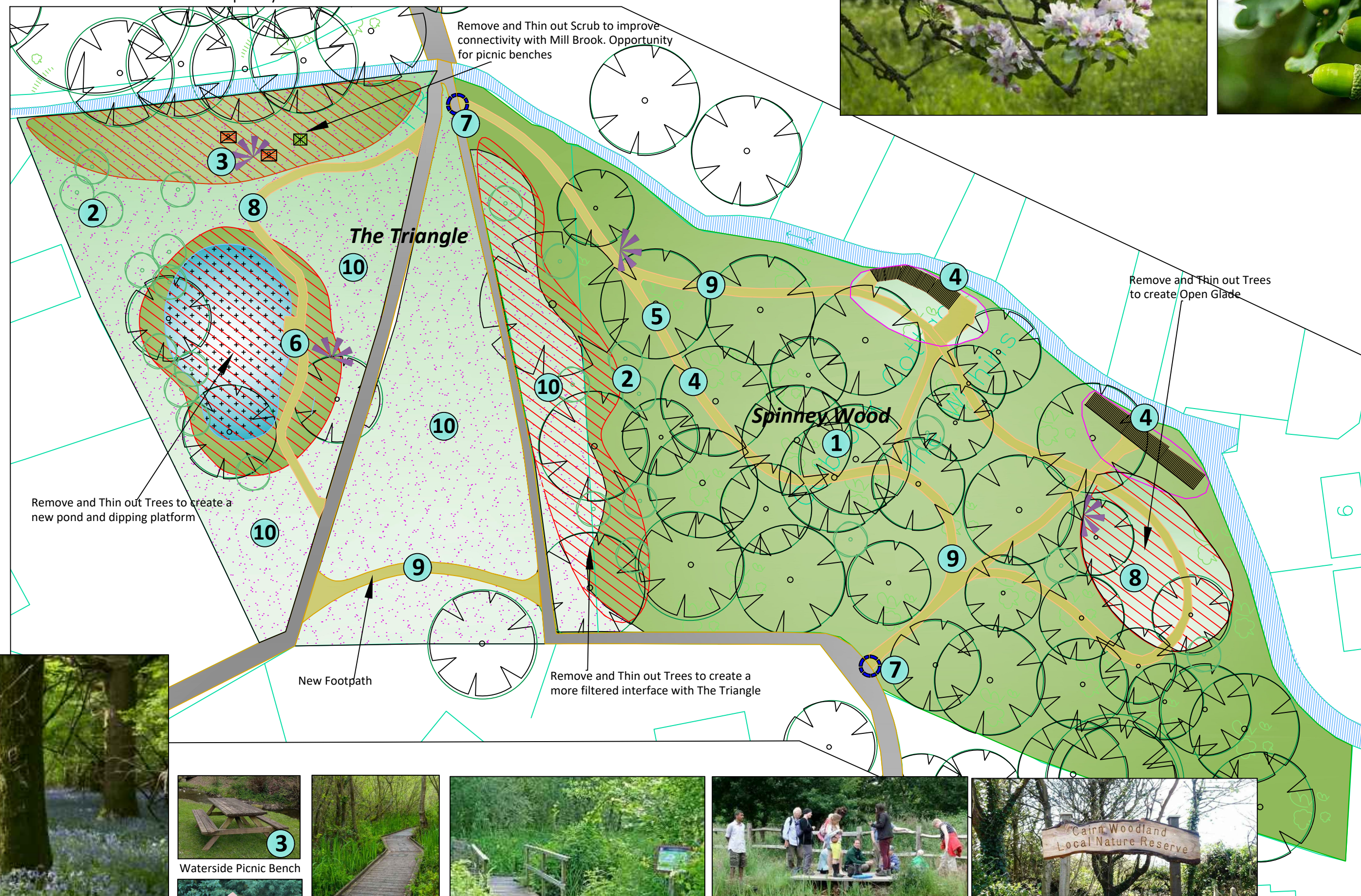
The Spinney, Tattenhall

Proposed Masterplan

Proposals

- Retain tranquil oasis within the heart of the village
- Provide surfaced footpath through Spinney Wood
- Retain local value to the village community
- Enhance biodiversity - Semi-natural deciduous woodland, scrub and running water
- Improve connectivity with Mill brook
- Enhance Biodiversity, Wildlife and Ecology
- Opportunity for enhanced breeding birds, foraging habitats for bats and suitable for badgers
- Opportunity to create a wider interlinked Nature Reserve
- Improved interface between Spinney Wood, Mill Brook and The Triangle
- Bird and Bat Boxes, Bug and Insect Hotels
- Picnic Benches and Seating
- New pond and viewing platform
- Timber Boardwalk
- Dwell Time, Signage and Interpretation
- Wildflower meadows
- Seasonal Interest
- Viewpoints, Improvement Natural Surveillance

Sensitive and considered interventions to protect and enhance Spinney Wood. To provide surfaced access routes, connectivity with Mill Brook and enhanced habitat and wildlife offer. The improvements would result in a more welcoming community wood and an improved and interconnected interface with surrounding open spaces to collectively represent a wider and more diverse Spinney nature reserve.



Enhanced Biodiversity, Flora and Fauna -Woodland management, including Copicing to allow more light for Blue Bell understory



Waterside Picnic Bench



Timber Boardwalk



New Pond and Pond Dipping Platform



New Pond and Pond Dipping Platform



Welcome Signage/ Interpretation



COMMUNITY Tree Planting



COMMUNITY Management Workshops



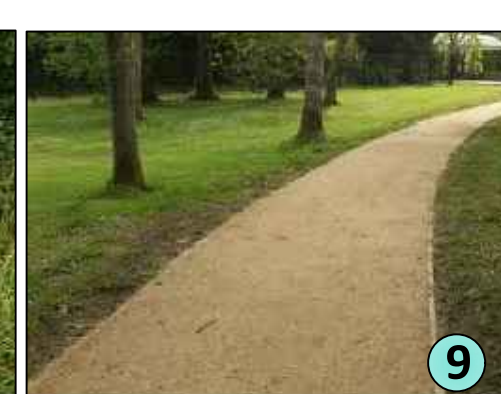
Structured Planting



Open Glades



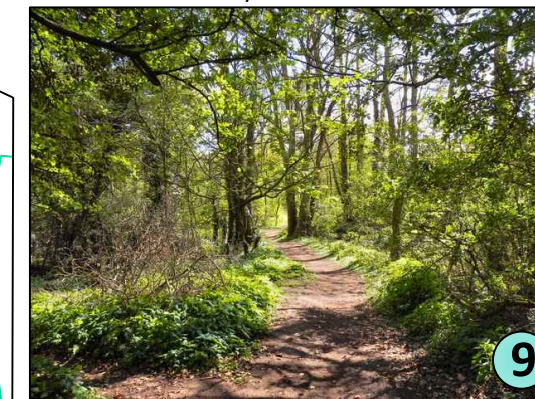
Seating, Rest and dwell time -enjoy viewpoints



Surfaced Footpaths



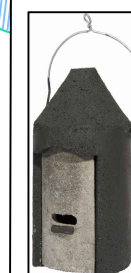
Enhance Biodiversity



Retaining Existing Character



Wildflower Meadow



Bird and Bat Nests



Insect and Bug Hotels

SPINNEY WOOD TATTENHALL Proposed Ideas Masterplan

Drawing Number: Number Rev

Drawn by: JS Scale:

Date: 15th Sept 2020 1:500 @A2



TOTAL ENVIRONMENT LANDSCAPE DESIGN
Nicholas House, Chester, CH1 2NU
01244 97 35 45